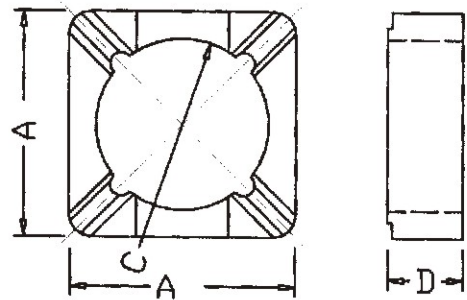
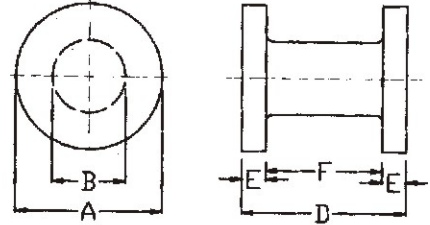
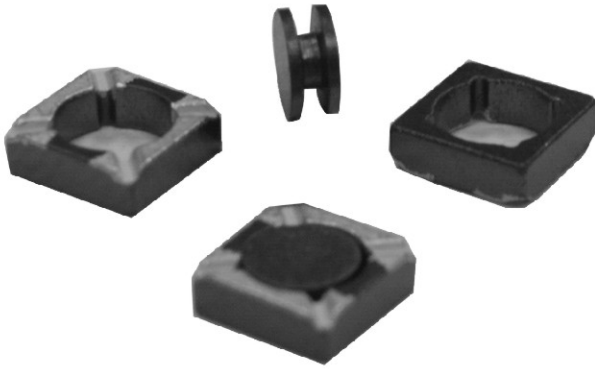


[SDRI TYPE]

面實裝 POWER CHOKE CORES 鍍銀型

Silver Plated Type



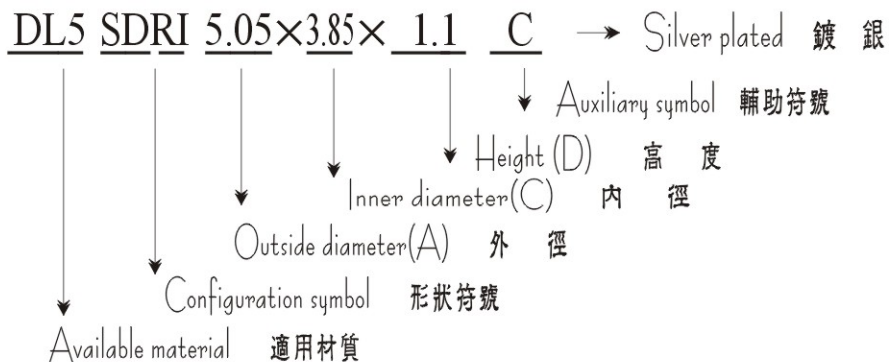
FEATURES 特長

特殊金屬電極處理之閉磁路，耐大電流用之表面粘著，DC-DC 轉換器抗流磁芯。

Magnetically shielded structure surface mount power choke cores treated with special metallic electrode for DC/DC converters.

PRODUCT IDENTIFICATION

產品識別碼



產品尺寸標注：

USEAGE 用途

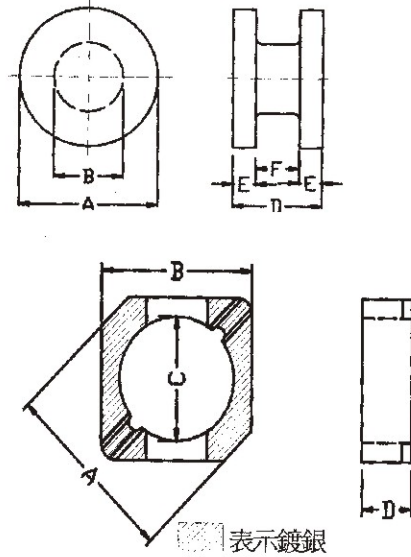
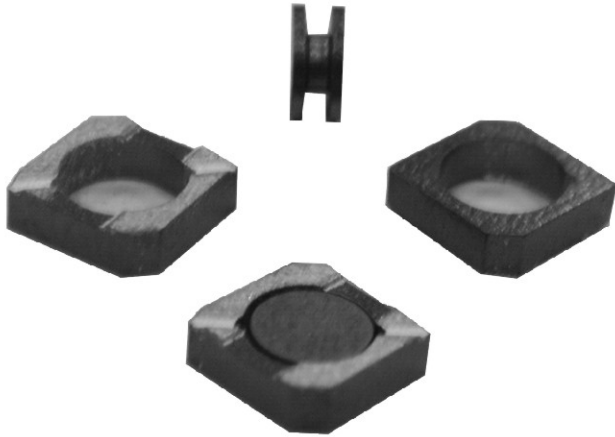
OA 機器等之電源用
VTR 照相機
液晶電視
Power supply of various kinds of OA equipment;
Camcorder;
LCD television set.

| 品名 | DR:A | B | D | F | SRI:A | C | D | H |
|-------------------|-----------|---------|----------|---------|-----------|----------|---------------|----------|
| DR3.55*1.1 | | | 1.1+0.05 | | | | | |
| SRI5.05*3.85*1.1C | 3.55±0.15 | 1.6±0.1 | -0.1 | 0.4±0.1 | 5.05±0.15 | 3.85±0.1 | 1.1+0.05/-0.1 | 1.5±0.25 |
| DR3.55*1.3 | | | 1.3+0.05 | | | | | |
| SRI5.05*3.85*1.3C | 3.55±0.15 | 1.8±0.1 | -0.1 | 0.6±0.1 | 5.05±0.15 | 3.85±0.1 | 1.3+0.05/-0.1 | 1.5±0.25 |
| DR3.55*1.7 | | | 1.7+0.05 | | | | | |
| SRI5.05*3.85*1.7C | 3.55±0.15 | 1.8±0.1 | -0.1 | 0.8±0.1 | 5.05±0.15 | 3.85±0.1 | 1.7+0.05/-0.1 | 1.5±0.25 |
| DR3.55*1.9 | | | 1.9+0.05 | | | | | |
| SRI5.05*3.85*1.9C | 3.55±0.15 | 1.6±0.1 | -0.1 | 0.9±0.1 | 5.05±0.15 | 3.85±0.1 | 1.9+0.05/-0.1 | 1.5±0.25 |
| DR3.55*2.4 | | | 2.4+0.05 | | | | | |
| SRI5.05*3.85*2.4C | 3.55±0.15 | 1.8±0.1 | -0.1 | 1.4±0.1 | 5.05±0.15 | 3.85±0.1 | 2.4+0.05/-0.1 | 1.5±0.25 |

[SDRI TYPE]

Silver Plated Type

面實裝 POWER CHOKE CORES 鍍銀型



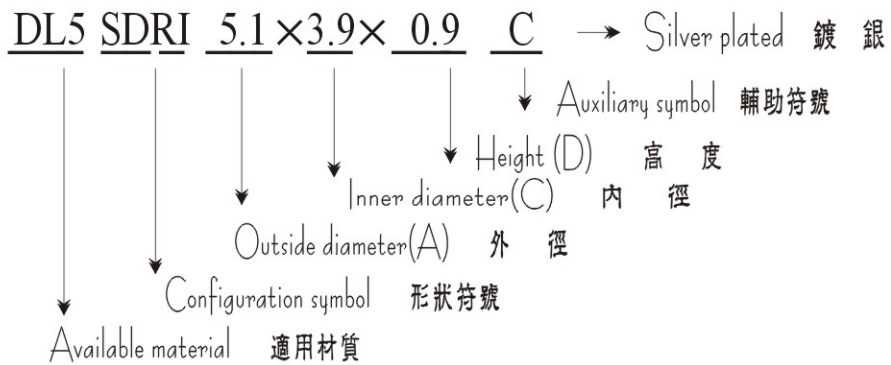
FEATURES 特長

特殊金屬電極處理之閉磁路，耐大電流用之表面粘著，DC-DC 轉換器抗流磁芯。

Magnetically shielded structure surface mount power choke cores treated with special metallic electrode for DC/DC converters.

PRODUCT IDENTIFICATION

產品識別碼



產品尺寸標注:

| 品名 | DR:A | B | D | F | SRI:A | B | C | D |
|-----------------|------------|---------|----------|----------|---------|---------|----------|----------|
| DR3.55*0.9 | | | 0.9+0.05 | | | | | 0.9+0.05 |
| SRI5.1*6.1*0.9C | 3.55±0.15 | 1.8±0.1 | -0.1 | 0.3±0.07 | 6.1±0.1 | 5.1±0.1 | 3.9±0.15 | -0.1 |
| DR3.55*1.1 | | | 1.1±0.1 | | | | | 1.1±0.1 |
| SRI5.1*6.1*1.1C | 3.55 ±0.15 | 1.8±0.1 | -0.1 | 0.4±0.07 | 6.1±0.1 | 5.1±0.1 | 3.9±0.15 | -0.1 |
| DR3.55*1.7 | | | 1.7+0.05 | | | | | 1.7+0.05 |
| SRI5.1*6.1*1.7C | 3.55±0.15 | 1.8±0.1 | -0.1 | 0.8±0.1 | 6.1±0.1 | 5.1±0.1 | 3.9±0.15 | -0.1 |
| DR3.55*1.9 | | | 1.9+0.05 | | | | | 1.9+0.05 |
| SRI5.1*6.1*1.9C | 3.55±0.15 | 1.6±0.1 | -0.1 | 0.9±0.1 | 6.1±0.1 | 5.1±0.1 | 3.9±0.15 | -0.1 |
| DR3.55*1.3 | | | 1.3±0.1 | | | | | 1.3±0.1 |
| SRI5.1*6.1*1.3C | 3.55±0.15 | 1.8±0.1 | -0.1 | 0.7±0.07 | 6.1±0.1 | 5.1±0.1 | 3.9±0.15 | -0.1 |
| DR3.55*2.4 | | | 2.4+0.05 | | | | | 2.4+0.05 |
| SRI5.1*6.1*2.4C | 3.55±0.15 | 1.6±0.1 | -0.1 | 1.4±0.1 | 6.1±0.1 | 5.1±0.1 | 3.9±0.15 | -0.1 |

USEAGE 用途

OA 機器等之電源用
 VTR 照相機
 液晶電視
 Power supply of various kinds of OA equipment; Camcorder; LCD television set.